



Norfolk Avenue,, N13 6AL

£700,000

 5  3  3  D

***** OPEN TO OFFERS FOR A QUICK SALE*****

Cole Harding is pleased to offer this large FIVE BEDROOM Semi-Detached house set on Norfolk Road situated off Wolves Lane, Palmers Green.

The property offers three reception rooms (part of the house has a 2 bed separate dwelling) three shower rooms with w/c, 5 to 6 bedrooms, modern fitted kitchen and bathrooms.

A short walk to a large selection of shops, restaurants and bus connections.

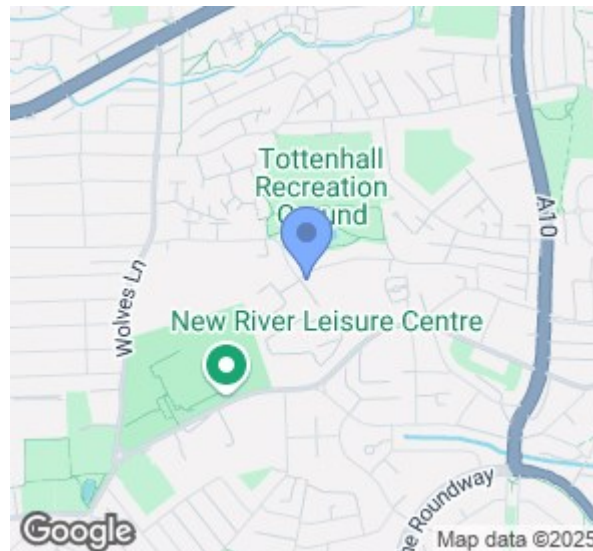
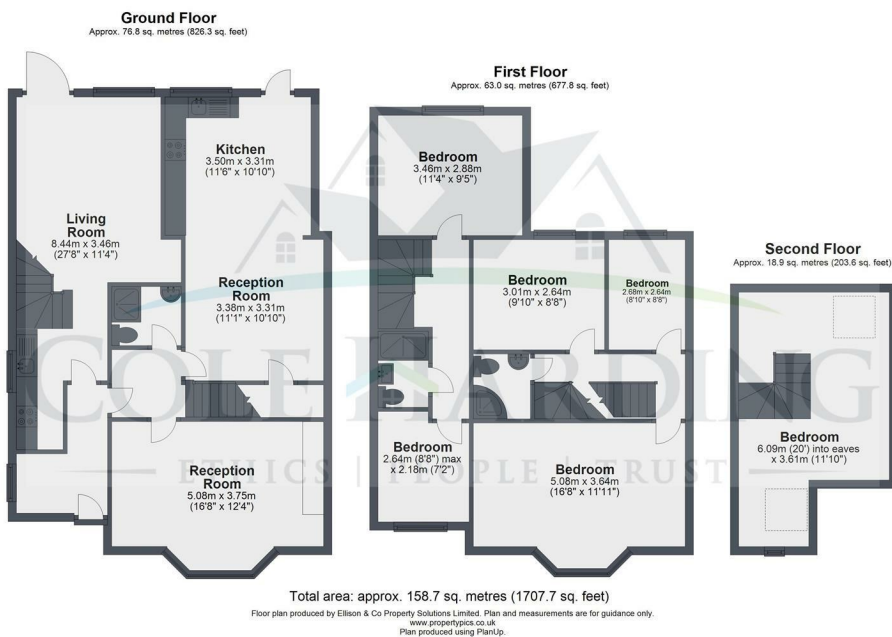
15 to 20 Minute walk to Wood Green underground station or a few stops away on the bus.

Property has potential to be converted in to flats or a HMO subject to planning.

- Five Bedroom Semi-Detached House
- Three reception rooms
- Three shower rooms & w/c
- Large bedrooms
- Modern fitted kitchen
- Private rear garden with side access
- Parking
- Potential to convert (stpp)
- Chain free
- Close to transport links

Viewing

To arrange a viewing on this property or require further information please contact one of our team on 0208 059 4444



Energy Efficiency Rating		
	Current	Potential
Very energy efficient - lower running costs		
(92 plus) A		
(81-91) B		79
(69-80) C	63	
(55-68) D		
(39-54) E		
(21-38) F		
(1-20) G		
Not energy efficient - higher running costs		
England & Wales	EU Directive 2002/91/EC	



These particulars, whilst believed to be accurate are set out as a general outline only for guidance and do not constitute any part of an offer or contract. Intending purchasers should not rely on them as statements of representation of fact, but must satisfy themselves by inspection or otherwise as to their accuracy. No person in this firm's employment has the authority to make or give any representation or warranty in respect of the property.

Cole Harding

11 Northumberland Park, London, N17 0TA

T. 0208 059 4444 | E. info@coleharding.co.uk